



STARWOOD®

www.starwood.com.tr

PARTICLE BOARD | RAW MDF | MELAMINE FACED BOARD
PRINTED BOARD | IMPREGNATED PAPER

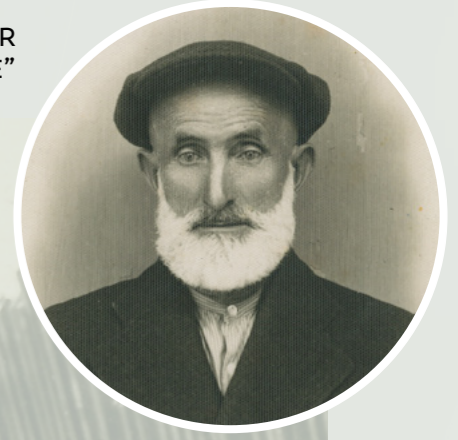
**WE ARE
THE WORLD'S
CHOICE**



FROM NATURE FOR LIFE

• Afghanistan • Albania • Algeria • Armenia • Azerbaijan • Bahrain • Benin • Bosnia Herzegovina • Bulgaria
• Cameroon • Chile • China • Colombia • Congo • Costa Rica • Ecuador • Egypt • England • Ethiopia • Georgia
• Germany • Ghana • Greece • Guatemala • Iran • Iraq • Ireland • Israel • Italy • Ivory Coast • Jordan • Kazakhstan
• Kenya • Kosovo • Kuwait • Lebanon • Macedonia • Malawi • Mali • Malta • Mauritania • Mauritius • Moldova
• Mongolia • Montenegro • Morocco • Nakhchivan • Nicaragua • Nigeria • Oman • Qatar • Pakistan
• Paraguay • Peru • Saudi Arabia • Senegal • Serbia • South Africa • Somalia • Spain • Sudan • Syria • Tanzania
• Tunisia • Turkmenistan • TRNC • UAE • Uganda • U.S.A • Ukraine • Uzbekistan • Venezuela • Yemen

"WE PROUDLY CARRY THE COMPANY FOUNDED BY OUR FATHER
AND GRANDFATHER IN THE 1900S TO THE FUTURE"



4 • GENERATION

Starwood, one of Yıldız Family companies engaged in forest products industry for 4 generations, is one of the biggest industrial companies in Turkey with its growing production capacity and new investments every year.



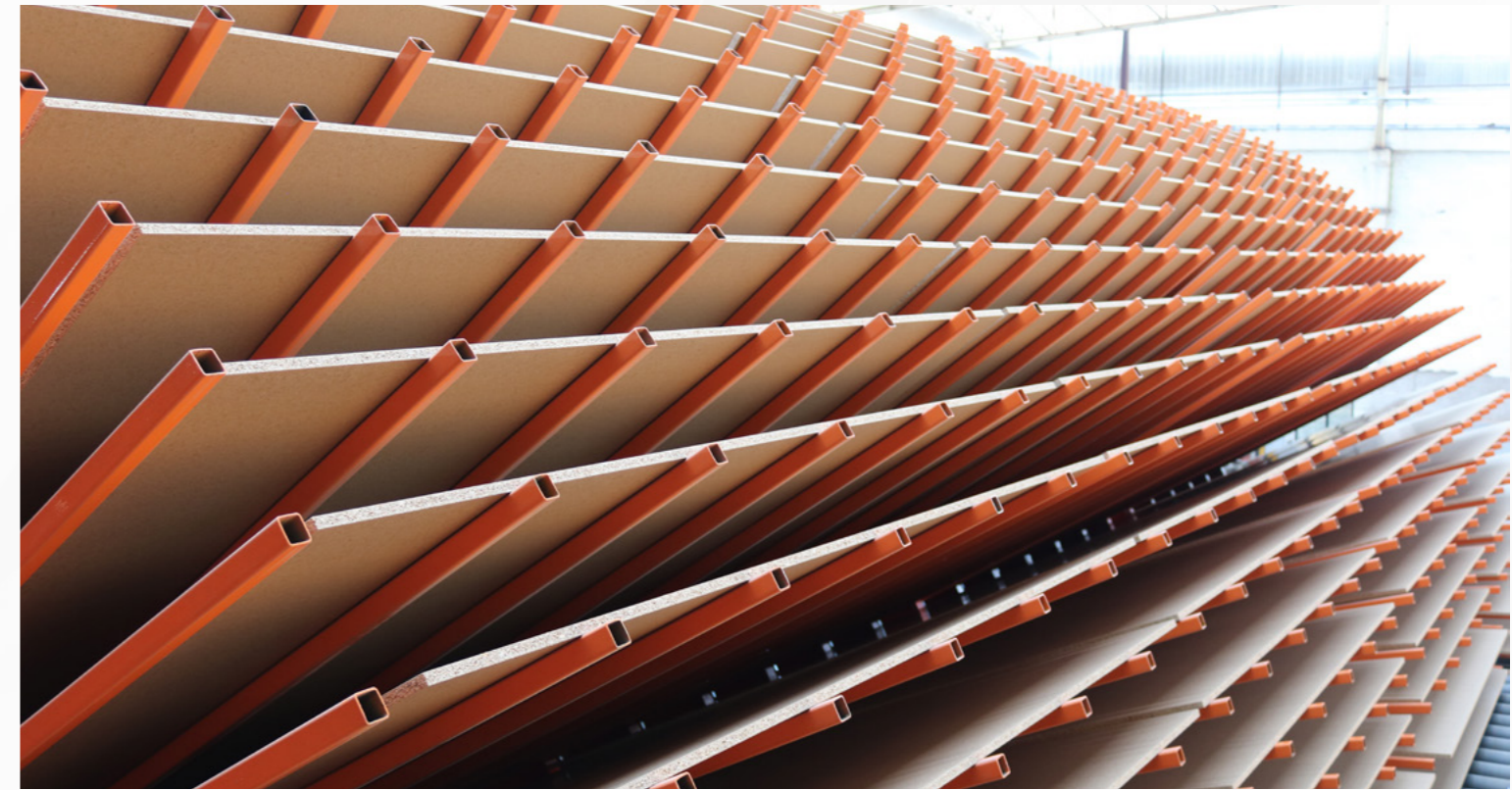
CHIPBOARD

The wood is chipped into small pieces and the wood chips are dried in the dryers oven until certain moisture content and after the sieving process the materials providing the glue, hardener and hydrophobic properties are mixed and pressed under a certain temperature and pressure for a certain time based.

While having better quality flakes, belt dryer also provides environment protection and energy savings.

With its 3 chipboard production lines produces 4.000 m³ of chipboard with thickness varying from 6 mm to 38 mm on a daily basis.

Dimensions	210x280 Superfine	210x280 Goldstar	210x366 Goldstar	210x280 Bluestar	183x366 Superfine	122x280 Superfine	183x366 Goldstar	183x366 Bluestar	183x366 P7	210x280 P7
8 mm	✓									
10 mm	✓									
12mm	✓				✓					
16 mm	✓	✓			✓		✓	✓		
18 mm	✓	✓	✓	✓	✓	✓	✓	✓	✓	✓
25 mm	✓				✓					
30 mm	✓				✓					



MDF

MDF - ULTRA MDF - MEGA MDF

MDF is a medium density fiberboard which is thermomechanically prepared from wood or other cellulosic raw materials after drying to a certain degree of humidity and then is glued with a glue of about 9 - 11% thermosetting (under temperature) and pressed under temperature and pressure. MDF stands for Medium Density Fiberboard with the word meaning Medium Density Fiberboard consists of the initials of the words. It is preferred because of its homogeneous density in MDF structure, its ability to be obtained in standard dimensions, the excellentness in milling process, the good grip on the surface and the edges.

With its 4 MDF production lines Starwood produces 5.500 m³ of MDF with thickness varying from 1.5mm to 30 mm on a daily basis, which is especially specialized in the production of thin MDF from 1.5mm to 8 mm.

The woods used in the production of MDF - ULTRA MDF - MEGA MDF are made into chips after they have been peeled off, these chips are washed with hot water, and the result of cleaning foreign materials such as dust, soil, ash and crust on this surface is obtained with only wood fiber and glue, MEGA MDF and ULTRA MDF are an R & D product that is lighter but has high resistance values. Both price and shipping offer customers a great advantage.

Dimensions	MEGA MDF						ULTRA MDF	
	210x280 Unsanded	210x280 Sanded	183x210 Sanded	183x366 Sanded	244x210 Unsanded	244x210 Sanded	183x366 Sanded	210x280 Sanded
4 mm	✓							
5 mm	✓				✓			
6 mm		✓				✓		
8 mm		✓				✓		
10 mm		✓	✓			✓		
12 mm		✓				✓		
14 mm		✓				✓		
16 mm		✓		✓		✓		
18 mm		✓		✓		✓	✓	✓

Dimensions	MDF												
	210x340 Unsanded	210x170 Unsanded	210x280 Unsanded	210x280 Sanded	183x366 Sanded	220x280 Sanded	183x210 Sanded	244x122 Unsanded	244x122 Sanded	244x183 Unsanded	244x210 Unsanded	244x210 Sanded	244x220 Sanded
1,5 mm			✓					✓					
1,8 mm			✓					✓					
2,2 mm			✓					✓					
2,5 mm			✓					✓					
2 mm			✓					✓			✓		
2,7 mm	✓	✓	✓					✓		✓			
4 mm			✓			✓	✓				✓		✓
5 mm				✓								✓	
6 mm			✓	✓		✓					✓	✓	
8 mm				✓				✓			✓	✓	✓
9 mm						✓						✓	
10 mm				✓								✓	
12 mm				✓		✓						✓	
14 mm				✓								✓	
16 mm				✓	✓			✓				✓	
18 mm				✓	✓	✓		✓				✓	
22 mm				✓									
25 mm				✓									
30 mm				✓									



MELAMINE FACED BOARD

CHIPBOARD – MDF – ULTRA MDF - MEGA MDF

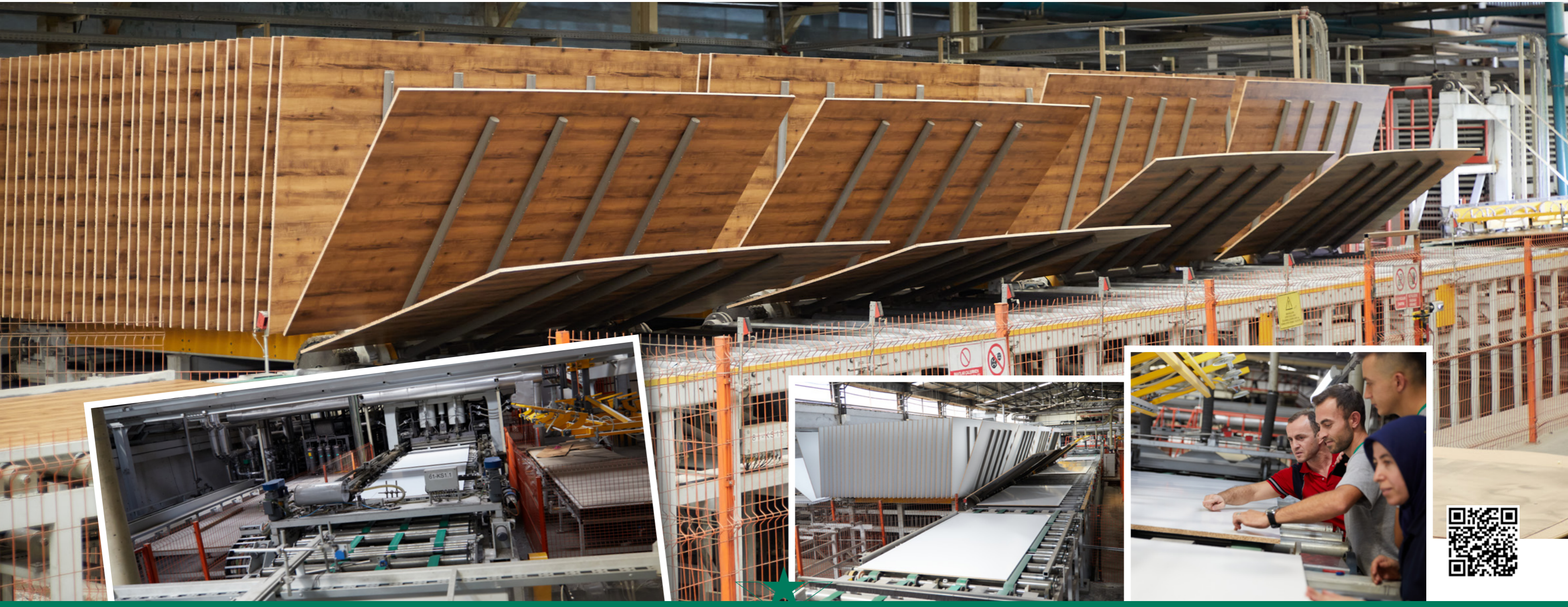
It is a decorative purpose panel which is produced of impregnated paper and board (Chipboard, MDF, MEGA MDF, ULTRA MDF) which is pressed under temperature and pressure for a certain period of time.

More than 150 designs and colors are produced with 13 different surfaces to obtain the nearest surface to be dyed in various textures.

While the production is done on glossy surfaces, to protect it from external influences plate surface is protected with folio or without foil.

17 melamine presses located in Turkey and existing melamine press in Georgia ensure that the company's daily capacity of production of 183 and 210 cm melamine faced boards is maintained at 65.000 sheets.

Dimension	CHIPBOARD				MDF				MEGA MDF			ULTRA MDF			
	210x280	183x366	183x280 Superfine	183x280 Goldstar	210x183	210x280	183x366	244x210	244x122	210x183	210x280	183x366	244x210	183x366	210x280
4 mm (One Face)					✓										
4 mm					✓										
6 mm						✓		✓							
8 mm	✓	✓				✓		✓	✓		✓		✓		
10 mm (One Face)										✓					
10 mm						✓		✓		✓					
12 mm	✓	✓				✓		✓							
14 mm						✓		✓					✓		
16 mm	✓	✓	✓			✓	✓	✓	✓		✓	✓			
18 mm	✓	✓	✓	✓		✓	✓	✓	✓		✓	✓	✓	✓	✓
22 mm						✓									
25 mm	✓	✓				✓									
30 mm	✓	✓				✓									



PRINTED BOARD CHIPBOARD – MDF - MEGA MDF

Primer, paste, double layer main paint by means of printing cylinder on the board (Chipboard, MDF or MEGA MDF) surface, if the pattern is to be painted, it is obtained as the result of polish application as ink and final coat of the pattern.

Primer, paste, base paint and inks applied to the surface of the board are water based products.

In order to give gloss to the surface of the painted plate and to create surface resistance against scratches, the last coat is solvent based

and the paint applied to the plate is subjected to ultraviolet rays and the solvent in the varnish is completely removed and the varnish is baked.

The company has a capacity of painting boards with thickness varying from 1,5 to 22 mm on painting lines amounting to 450.000 sq m. per day. In addition to almost 40 standard colors, painting can be arranged in custom colors according to the customers demand.

Dimensions	CHIPBOARD One Side Plain P/P Chipboard One Side Design D/D Chipboard			MDF One Side Plain P/P Chipboard One Side Design D/D Chipboard			MEGA MDF One Side Plain P/P Chipboard One Side Design D/D Chipboard		
	210x280	183x366	210x170	210x280	244x183	244x210	122x244	210x280	244x210
1,5 mm				✓		✓	✓		
1,8 mm				✓		✓	✓		
2 mm				✓		✓	✓		
2,2 mm				✓		✓	✓		
2,5 mm				✓		✓	✓		
2,7 mm			✓	✓	✓	✓	✓		
4 mm				✓		✓		✓	
5 mm				✓		✓		✓	✓
6 mm				✓		✓		✓	✓
8 mm	✓	✓		✓		✓		✓	✓
18 mm	✓	✓		✓		✓			

40
standard
colors

IMPREGNATED PAPER

Paper which is supplied as raw paper from abroad and has a weight of 60-100gr/m² is impregnated with chemical additives and treatment can be produced in different sizes.

The production of 600,000 m² of impregnated paper per day is produced by 6 impregnation lines located in Starwood.

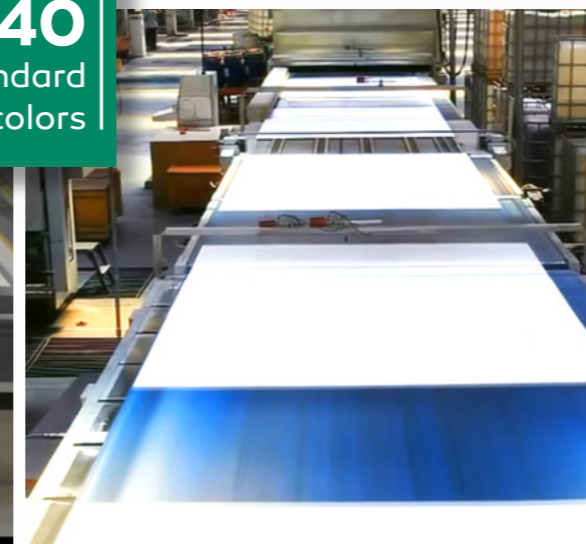
In addition to its own needs, Starwood also produces impregnated paper export to many countries.

Thanks to the customs warehouse located in its place, customers can be served quickly.



PRODUCT DIMENSIONS

- 124 cm x 246 cm
- 124 cm x 277 cm
- 183 cm x 210 cm
- 185 cm x 246 cm
- 185 cm x 257 cm
- 185 cm x 368 cm
- 185 cm x 276 cm
- 185 cm x 422 cm
- 212 cm x 213 cm
- 212 cm x 368 cm
- 212 cm x 282 cm



QUALITY STANDARD

All Starwood products are classified as E1 products, free from carcinogenic substances and possess certificates demonstrating their

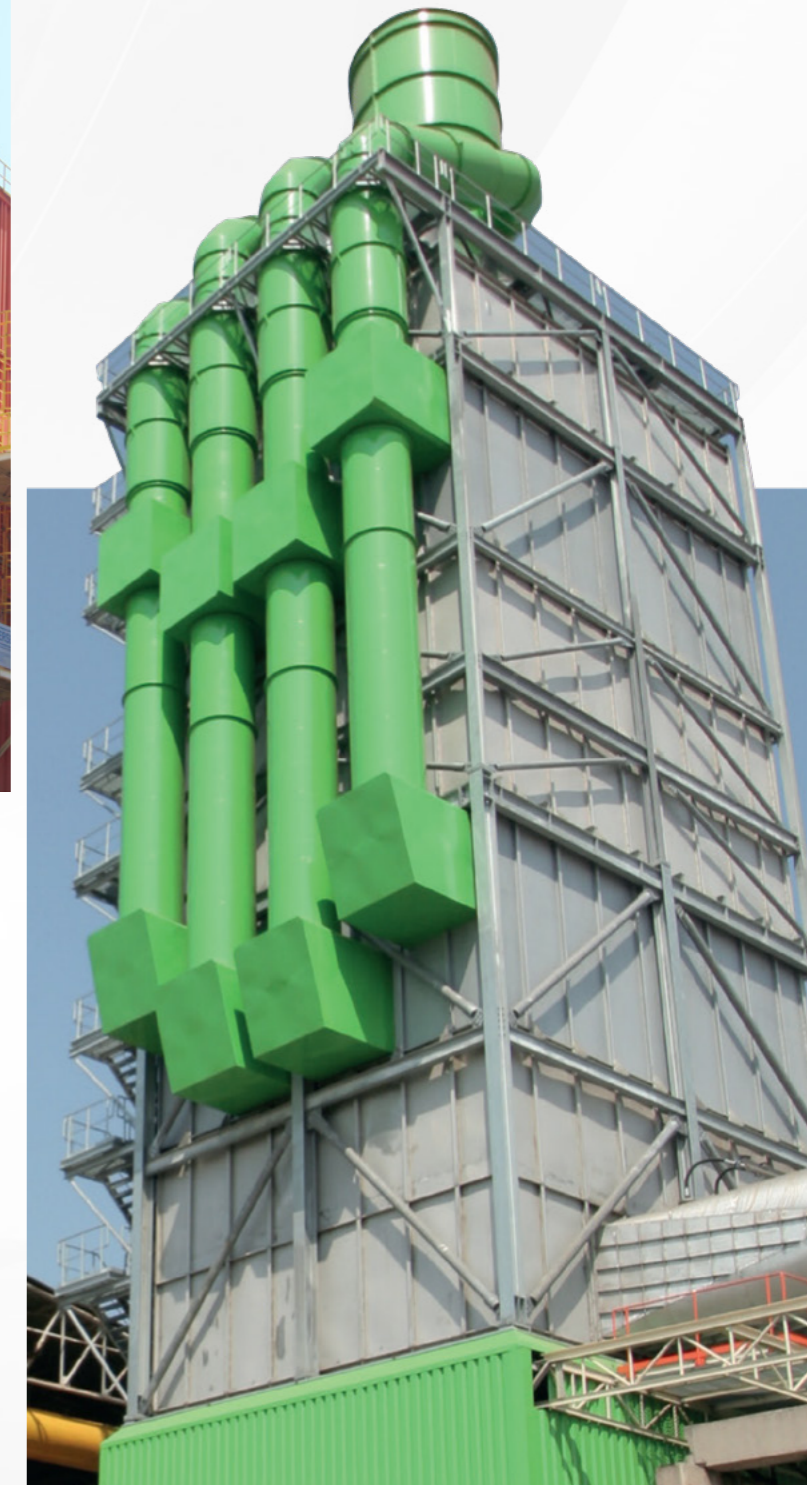
compliance with national and international quality standards such as FSC, CARB/EPA.



ENVIRONMENTALLY FRIENDLY

Water-based electrostatic precipitator, installed by Starwood, which adheres to environmentally friendly practices and is deeply committed to clean air, ensures the company's highly sensitive and respectful approach towards the

city in which it is located. Biomass plant allows to burn safely bio-mass waste which are harmful when burned in open air. Also useful to country's economy by generating electricity.



İNEGÖL PLANT

Total Area: 204.000 m²
Closer Area: 182.900 m²
3 Particle Board Lines
2 MDF Lines
12 Short Cycle Press Line
Formaldehyde-Resin Plant



HAMZABEY PLANT

Total Area: 402.000 m²
Closer Area: 120.000 m²
2 MDF Lines
3 Direct Painting Lines
5 Short Cycle Press Line
Wood Preperatinon Site



ALANYURT PLANT

Total Area: 51.000 m²
Closer Area: 39.500 m²
Logistic Center



BALIKESİR PLANT

Total Area: 45.200 m²
Closer Area: 8.900 m²
Wood Preperatinon Site



DENİZLİ PLANT

Total Area: 52.800 m²
Closer Area: 1.500 m²
Wood Preperatinon Site

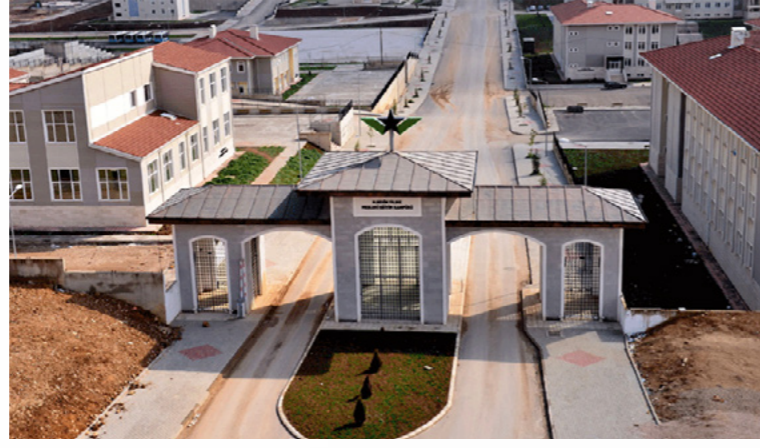


ALL TOTAL AREA
755.000 m²

SOCIAL RESPONSIBILITY PROJECTS

Starwood not only sees itself as a company but also as a responsible community member. The company continues to meet the needs of the community and contribute to the sustainability of our world.

- ✓ EDUCATION
- ✓ SOCIO-CULTURAL
- ✓ ENERGY
- ✓ ENVIRONMENT



CONTACT Us



HEADQUARTERS

Yeniköy - Sarıyer / İstanbul / TURKEY
Tel : 444 92 90



MAIN OFFICE

Organize Sanayi Bölgesi 2. Cad.
İnegöl / BURSA
Tel : +90 (224) 294 32 00
Faks : +90 (224) 294 32 45
starwood@starwood.com.tr



İSTANBUL EXPORT OFFICE

İkitelli Keresteciler Sitesi 10 Blok Sk. 10B Blok
No:1/1 Başakşehir / İSTANBUL / TURKEY
Tel : +90 212 670 53 04
Faks : +90 212 670 53 18
istanbul@starwood.com.tr



ANKARA OFFICE

Ereğli Cd. No:8 Siteler - Ankara / TURKEY
Tel : +90 312 353 29 39
Faks : +90 312 351 71 96
ankara@starwood.com.tr



BURSA OFFICE

Duaçınarı Mh. Selçuk Sk. No:8 Bursa / TURKEY
Tel : +90 224 364 85 01
Faks : +90 224 364 85 00
bursa@starwood.com.tr



KONYA OFFICE

Hacı Yusuf Mescit Mh. Kılınçbey Sk. No:7
Karatay - Konya / TURKEY
Tel : +90 332 342 35 58
Faks : +90 332 342 38 23
konya@starwood.com.tr



If you order and fulfill your duties, we will load your order up to a maximum of one week.

This is our sales policy.

All our goods are in E-1 standards.



Please
Download PDF



STARWOOD®

www.starwood.com.tr



PRODUCTION SITE

Organize Sanayi Bölgesi 2. Cadde 16425
İnegöl - BURSA / TURKEY
Tel : +90 224 294 32 00
Faks : +90 224 294 32 45
starwood@starwood.com.tr

EXPORT OFFICE

İkitelli Keresteciler Sitesi 10 Blok
Sk. 10B Blok No:1/1 Başakşehir /
İSTANBUL / TURKEY
Tel : +90 212 670 53 04
Faks : +90 212 670 53 18
istanbul@starwood.com.tr